

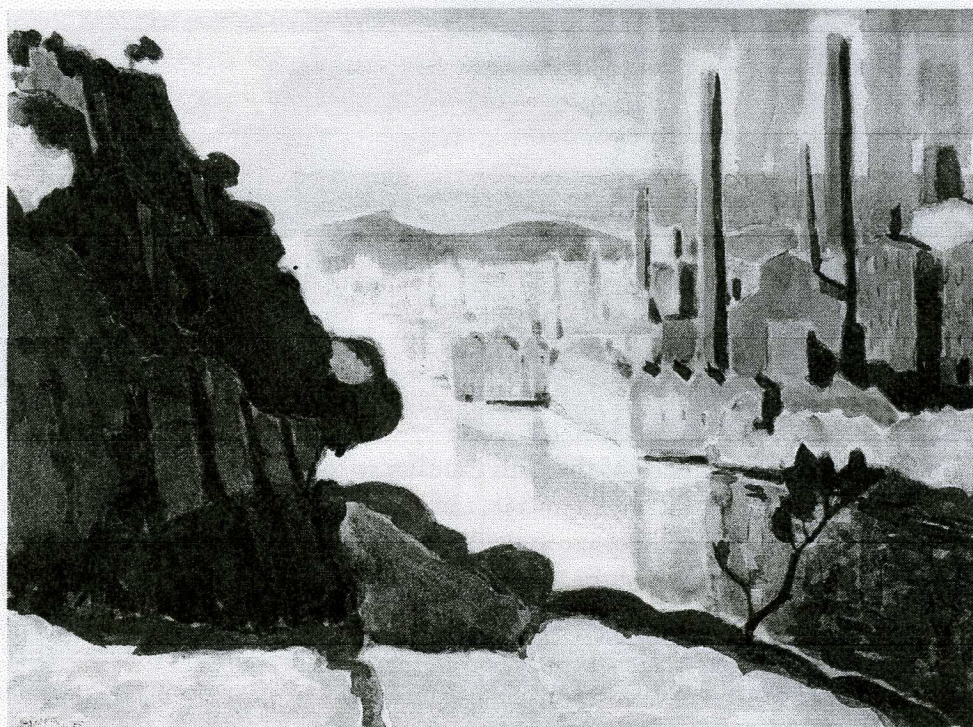


Samples of work displayed at PCCC to celebrate both Black History and Women's History Month. From left: an image, Computerized, by Florence Wint, My Jammin' by Evelyn Graves and Aunt Sarah by Nette Forné Thomas.

Conceptual Confluence, an exhibit by Eleta Caldwell, Liz Cenedella, Evelyn Graves, Nette Forné Thomas and Florence Wint opens Feb. 2 in celebration of Black History Month at PCCC. Presented by the PCCHC with Nette Forné Thomas as curator, the exhibit will span and celebrate both Black History and Women's History Months. The show is on view in the Broadway, LRC and Hamilton Club Galleries through March 28. The Broadway and LRC Galleries are at Broadway and Memorial Dr. in the downtown historic district of Paterson. The Hamilton Club Gallery is at 32 Church St. For hours and info, contact Jane Haw at 973-684-5448 or jhaw@pccc.edu or go to www.pccc.edu/art/gallery. **W**

Distance and Difference is an exhibit by Ted Richards, displayed until Feb. 23 at the William A. Monaghan, Jr. Gallery within the Louis Bay 2nd Library, 345 Lafayette Ave., Hawthorne. A reception for the artist, free and open to the public, is on Feb. 6, from 6 to 8 pm. Info, call 973-427-5745. **W**

The Clifton Arts Center Gallery will present **Alchemy** by hob'art co-operative gallery, an exhibit of various art media and styles. The exhibit is displayed until Feb. 23. Admission is \$3. This group of artists has interpreted



Paterson Factories (View from Monument Rock), a watercolor and gouache on paper by Oscar Bluemner (1867-1938) is one of 29 displayed as part of an exhibit, entitled Picturing Paterson, New Jersey, at the Montclair Art Museum. The exhibit is displayed Feb. 17 to June 16. The museum is at 3 South Mountain Ave., Montclair. Info and fees at 973-746-5555 or www.montclairartmuseum.org.

alchemy in a broad spectrum, exploring past and present or life or death in their art. In some cases, they are reinventing language and the incorporation of symbols as a mode of communication through their artwork. Hob'art co-operative gallery was founded in 2002 by Liz Cohen. The Clifton Arts Center is located on the grounds of the Municipal Complex. Hours and more info at: www.cliftonnj.org.